



2022 Community Impact Annual Report



Care.
Above All Else.



For over 25 years, Meridian has been a trusted partner in Michigan providing high-quality healthcare to our members, educating our providers, and strengthening our communities through strong alliances with local grassroots organizations.

As the largest Medicaid MCO in Michigan, Meridian continues to be a leader in healthcare innovation. We are focused on mitigating the impact of social determinants of health such as the need for food, housing, and more, which affects overall health outcomes. We demonstrate our motto, **Care. Above All Else.**, in everything we do each day. We are a visible presence in the diverse communities we serve. Both our executives and employees volunteer at community and partner events. We are committed to advancing health equity for everyone, regardless of which zip code they live in or how they chose to self-identify.



The pandemic revealed cracks in the healthcare system. Many of our youth are still trying to process months of imposed isolation and social distancing. Meanwhile, others also face environmental challenges. Meridian has responded through offering our time and resources to communities and allying with organizations like the Boys & Girls Clubs of Southwest Michigan, which teaches youth social-emotional awareness and coping skills through its program called Be There.

We thank our teams and partners for their support and making the achievements highlighted in Meridian’s 2022 Community Outreach Annual Report possible. We hope you will enjoy our report.

Patricia Graham
Plan President & CEO



Investments	Volunteer Hours	Events	People Reached	Screenings/ Vaccines
\$210,600	355	49	65,000	565



COMMUNITY ENGAGEMENT



Jill Howard
VP, Population Health & Clinical Operations


Meridian’s community presence showcases our mission to transform the health of our communities, one person at a time. We understand the power of human connection. Our community health workers returned to the field in April 2022 after months of remote work and social distancing. They meet face-to-face with our members, working diligently every day to build trusted relationships in diverse, underserved communities. They have an important role in helping to identify and address social determinants of health needs for things such as food, housing, transportation, and more!



225
ATTENDEES

25%
RECEIVED
VACCINES

In July, Meridian partnered with Faith Redemption Center in Detroit to host a community health and wellness fair, which raised mental health and COVID-19 awareness.



Megan Slaven
Director of Communications

At Meridian, we know that the health of a community goes beyond just medical care. That is why we value our community partners and provide opportunities for our employees to get involved. It's Meridian's belief that by working side-by-side together, we can achieve more and truly impact the health and lives of the communities we serve.

Meridian deeply values its longtime partnership with The Salvation Army of Metro Detroit. For the fifth year in a row, Meridian partnered with the Salvation Army to help distribute coats, gloves and hats to Detroiters and helped serve meals from its Bed & Bread trucks. The Bed & Bread program serves more than 3,500 meals daily to men, women and children and provides overnight shelter year round for residents who have nowhere to go. Our alliance has grown to cover the state. For example, Meridian provided self-care kits for the Salvation Army to distribute to the homeless in Kalamazoo, and we also donated Christmas meals to families in Benton Harbor.

DONATIONS FOR
COATS, HATS,
AND SOCKS:
\$25,000



GLEANERS
EST. 1977
FEEDING PEOPLE. NOURISHING LIVES.

Meridian is pleased to be a long-term strategic partner with Gleaners Community Food Bank of Southeastern Michigan, which is where most of our members live. Our executives and employees regularly volunteer at Gleaners warehouse in Taylor to help sort and box food for our neighbors. Gleaners distributes the food to over 400 partner agencies ranging from schools to soup kitchens.

During Gleaners' Double Your Donation Day

Meridian donated:	Total with match:	Meals for those in need:
\$7,000	\$14,000	42,000



Dr. Kay Judge
Chief Medical Officer

Meridian is committed to providing equitable healthcare to individuals and families. We believe public-private partnerships provide a pathway to social justice and help root out the systemic causes of health disparities that exist in too many communities across Michigan and the U.S.

Meridian recognizes the strong link between addressing social determinants of health, such as homelessness and advancing health equity. In 2022, Meridian supported both the NOAH project in Detroit and Covenant House in Detroit and Grand Rapids to provide much needed resources to those who are at risk of homelessness.



Networking, Organizing, and Advocating for the Homeless



COMBINED DONATIONS:
\$15,000





Meridian understands the connection between literacy, quality of life and better health outcomes over one's lifetime. We provided funding to our reading partners to support the purchase of age-appropriate, high-quality books as part of initiatives toward advancing health equity and encouraging parents to read to their children. Programs supported included United Way for Southeastern Michigan's Read United, which tackles "book deserts"; Grace Health of Battle Creek's Reach Out and Read pediatric reading program; and Volunteers of America-Michigan: Operation Backpack® initiative. The latter's mission is to provide backpacks stuffed with school supplies for homeless and at-risk students before the first day of school, so they feel a sense of belonging and are prepared to thrive.

BOOKS
2,350

BACKPACKS
250





BOYS & GIRLS CLUBS
OF GREATER SOUTHWEST MICHIGAN

Meridian supports the mental health and well-being of our youth. Thanks to the support of Meridian and other groups, the Boys & Girls Clubs of Greater Southwest Michigan was able to add a second full-time social worker in 2022 to help oversee its program called Be There, which teaches social-emotional awareness and coping skills. The Clubs currently have 1,561 registered members and all of them participate in the program.



Nicole Felix
Senior Director, Government Relations

In the spirit of community, Meridian wholeheartedly embraces opportunities to illuminate the lives within our neighborhoods, especially during the holiday season. As we celebrate the joy of giving, we sincerely believe that by uplifting individuals and their families during these cherished moments, we sow seeds of hope that flourish throughout the year.

Every year, Meridian helps make the holidays brighter for Michigan families. Through Meridian's volunteer and financial support, nonprofits such as Holiday Hope in Flint, the Benton Harbor Salvation Army, and Matrix Angel Tree in Detroit have been able to provide holiday meals and gifts for many families and children.

TOTAL HOLIDAY DONATIONS
\$20,726

Kim Lubbers

VP, Network Development & Contracting

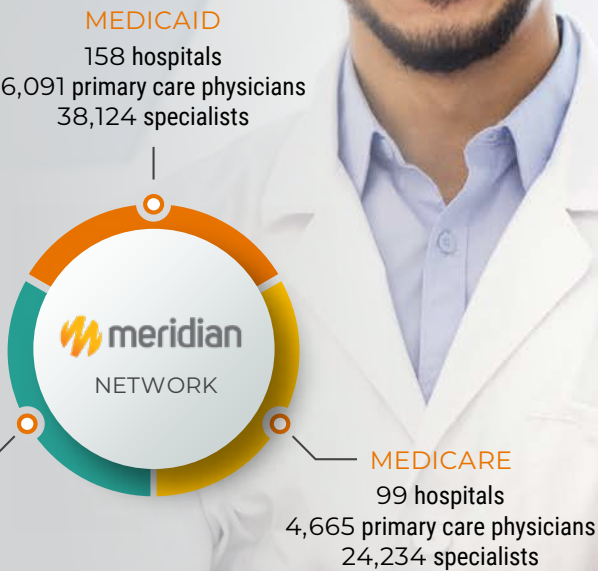


At Meridian, our providers are more than healthcare professionals. They are our collaborative partners. Through our innovative value-based care program, Meridian rewards and gives financial incentives to providers for the quality of care they give to patients, not the quantity of care. This approach to accountable, value-based care represents a shift from the traditional fee-for service reimbursement model. We believe good data enables better decisions and can lead to better health outcomes. We utilize data to support providers, predict patient behaviors, prevent health decline and to develop care management programs for our members.

To show our appreciation to front-line workers who were hit hardest during the COVID-19 pandemic, Meridian provided lunch to staff at multiple locations at Children’s Hospital in Detroit and Family Health Center in Kalamazoo. Meridian volunteers were on-site to personally serve the food and offer their gratitude.



TOTAL DONATED
\$4,750



PROVIDER RELATIONS

COMMUNITY PARTNERS

- A Girl Like Me, Inc.

Advanced Technology Academy

Albion Healthcare Alliance

Babies R Precious LLC.

Best Start for Babies

Blessed Ground International Ministries

Boys and Girls Club of Greater Southwest Michigan

Building Stronger Communities Council

Calhoun County Homeless Coalition

ChristNet Services

City of Dearborn Heights

Clinton County Project Connect

Covenant House

Detroit Health Department

Detroit Lead Partnership

Disability Rights Michigan

Eastern Market

Faith Redemption Center Church of God in Christ

Family Health Center

Georgia Street Community Collective

Gleaners

Grace Health

Great Lakes Bay Health Centers

Greater Flint Health Coalition

Holiday Hope

Homeless Coalition of Calhoun County
- Jackson Health Network

Kent County Oral Health Coalition

Leland Baptist Church

Matrix Human Services

Michigan Community Health Network

MIU Mens Health Foundation

Motor City Pride

New Victory Way Assembly Church

The Noah Project

Northern Michigan Community Health Innovation Region

Salvation Army

Sickle Cell Disease Association of America

St John's United Church of Christ

St. Clair County Mental Health Authority

Unify Detroit Coalition

United Way of Southeastern Michigan

University of Michigan Health - West Community Health Center

Uplift Family Services

Viola Liuzzo Park Association

Volunteers of America

Wayne County Healthy Communities

Wayne Health Mobile Unit

Wayne Pediatrics

Western Wayne Family Health Center

What About Us



Care. Above All Else.



